



Dell S Series Monitors

S2740L 27", S2440L 24", S2340L/M 23",
S2240L/M 21.5" Monitors with LED

Reviewers' Guide

Ad#G12003068

Dell S Series Monitors

S2740L 27", S2440L 24", S2340L/M 23", S2240L/M 21.5"

Monitors with LED



New Dell S Series Monitors.

When it's on, you're there.

Redefining elegance and performance, in a virtually borderless design.
Watch everything come alive, with vivid clarity and dazzling color accuracy.

Dell S Series Monitors

S2740L 27", S2440L 24", S2340L/M 23", S2240L/M 21.5"
Monitors with LED

Feel the thrill of being there.

Turn on the action with our new range of finely crafted monitors. Available in 27", 24", 23" and 21.5" sizes, get blown away with razor-sharp images, crisp edges and enhanced picture quality.

Seamless viewing experience and elegant craftsmanship

Redefine your experience with a flushed edge-to-edge glass, and almost frameless design on a glossy screen.

Remarkable screen performance

Enjoy vivid cinematic-quality images with full HD 1920 x 1080 (max) resolution in an ultra-wide 178°/178° viewing angle.

Comfort and convenience

Designed with you in mind, our panels tilt easily up to 4° forward or 21° backward for maximum comfort. Connect seamlessly to your PC and multimedia devices with the available port options.



Dell S Series Monitors

S2740L 27", S2440L 24", S2340L/M 23", S2240L/M 21.5"

Monitors with LED



Immerse yourself.

Get a front-row seat with the sophisticated S27" and S24" monitors, featuring ultra-wide viewing, edge-to-edge glass and our new Image Enhance feature.

Sophisticated styling:

Experience a lifelike view with a virtually frameless 27" and 24" screen featuring edge-to-edge glass.

Creative projects, movies and games appear expansive on this 23" and 21.5" screens with an almost-invisible 0.08" (2mm) bezel.

Superb performance:

Images come alive with picture-boosting Image Enhance, ultra-wide viewing and Full HD resolution (1920 x 1080 max.) in a 16:9 widescreen format.

Versatile connections:

Connect to a laptop or desktop with VGA and DVI-D (HDCP). Explore HD viewing options with HDMI. Connect to devices with two USB ports on the S2740L monitor.



Dell S Series Monitors

S2740L 27", S2440L 24", S2340L/M 23", S2240L/M 21.5"

Monitors with LED

Thrilling by design.



Contemporary styling:

A bezel-free, edge-to-edge glass design creates an expansive view on the 27" and 24" monitors.

Virtually borderless:

Experience a lifelike view with an elegant, virtually borderless displays, featuring an almost-invisible 0.08" (2mm) bezel on the 23" and 21.5" monitors.

Big and bold:

Images appear lifelike on this glossy, LED-backlit S series monitors.

Beauty plus refinement:

Add elegance and contemporary style to your media room or home office. The S Series monitors offer a pristine finish and premier craftsmanship.

Dell S Series Monitors

S2740L 27", S2440L 24", S2340L/M 23", S2240L/M 21.5"

Monitors with LED



Enter the adventure.

Ultra-wide viewing angle:

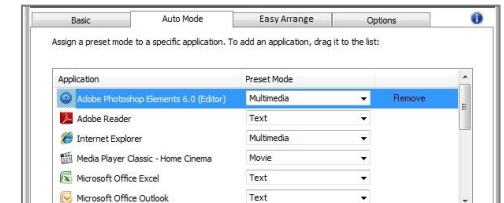
Get immersed from nearly any perspective with an ultra-wide 178°/178° viewing angle.

Stunning clarity:

Savor razor-sharp detail in games, movies and photos with color-boosting Image Enhance. Vivid clarity shines with a mega-dynamic contrast ratio of 8 million:1 (typical) and wide color gamut.

Customizable color:

Dell Display Manager keeps you productive with fast access to software such as Auto Mode, which lets you select your preferred preset modes for specific applications.



Full HD resolution:

Watch images come alive in cinematic quality with Full HD resolution (1920 x 1080 max.) in a 16:9 widescreen format.

Dell S Series Monitors

S2740L 27", S2440L 24", S2340L/M 23", S2240L/M 21.5"

Monitors with LED

Work with ease.
**Stay
entertained
longer.**



Be comfortable:

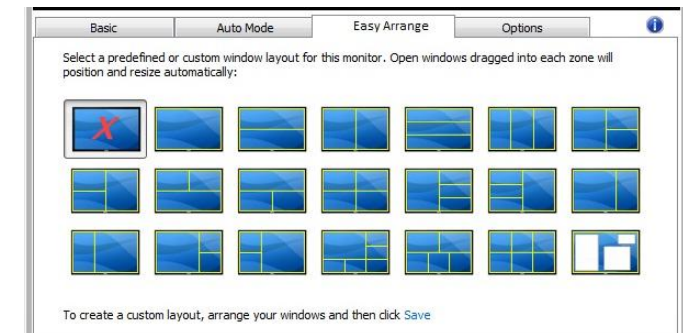
Set your preferred viewing angle with extensive tilt adjustability. Tilt the panels up to 4° forward or 21° backward.

Stay versatile:

Connect to your laptop or desktop with VGA and DVI-D (HDCP)*. The HDMI** port lets you explore high-velocity HD entertainment options. The S2740L also allows you to connect to multiple devices with two USB ports.

Organize your screen:

Tile your applications with Easy Arrange software so you can see them all clearly at a single glance. Even select your preferred desktop design layout.



*Only available in the M suffix models and the S2740L monitor.

** Only available in the L suffix models.

Dell S Series Monitors

S2740L 27", S2440L 24", S2340L/M 23", S2240L/M 21.5"

Monitors with LED



Be environmentally smart and enjoy a valuable warranty.

Go eco-minded:

In addition to being ENERGY STAR®-qualified and EPEAT® Silver-registered, the S Series monitors feature arsenic-free glass and a mercury-free LED panel.

Save resources:

Reduce power consumption by dimming the monitor or by putting it into sleep mode with PowerNap.

Gain support:

The S Series monitors come with Dell's Limited Hardware Warranty¹ and Advanced Exchange Service². One year Limited Hardware Warranty in USA and LAR, 3-year Limited Hardware Warranty for ROW.

¹ For a copy of the Limited Hardware Warranty, write to Dell USA LP, Attn: Warranties, One Dell Way, Round Rock, TX 78682 or see www.dell.com/warranty.

² Advanced Exchange Service: Replacement part/unit dispatched, if needed, following completion of phone/online diagnosis. Fee charged for failure to return defective unit. Availability varies. Other conditions apply.



Product specifications

Dell S2740L 27" Monitor with LED

Display	
Viewable image size (diagonal)	68.6 cm (27 inches)
Horizontal	597.9 mm (23.54 inches)
Vertical	336.3 mm (13.24 inches)
Maximum resolution	1920 x 1080 at 60 Hz
Aspect ratio	16:9
Pixel pitch	0.311 mm
Brightness (typical)	270 cd/m ²
Color gamut (typical)	84% ¹
Color depth	16.7 million colors
Contrast ratio (typical)	1,000:1
Dynamic contrast ratio (typical)	8 million:1
Viewing angle (typical) vertical/horizontal	178°/178°
Response time (typical)	7 ms with overdrive (gray to gray)
Panel type	In-plane switching
Backlight	LED
Connectivity	
Connectors	VGA, 2 x USB, DVI-D (HDCP), HDMI
Design Features	
Stand	Tilt, and built-in cable management
Security	Security lock slot and stand lock (security lock and M3x6mm screw for stand lock not included)
VESA mounting support (wall mount sold separately)	100 mm x 100 mm

Power	
AC input voltage/frequency/current (max)	100 to 240 VAC/50 or 60 Hz ± 3 Hz/1.2 A
Power consumption (normal operation, typical)	21 W
Power consumption (active-off mode)	<0.5 W
Dimensions (with stand)	
Height	458.7 mm (18.06 inches)
Width	641.9 mm (25.27 inches)
Depth	215.8 mm (8.50 inches)
Weight	
Weight without stand assembly (For wall mount or VESA mount considerations – no cables)	5.28 kg (11.62 lbs)
Weight with stand assembly and cables	7.56 kg (16.67 lbs)
Weight with packaging	9.18 kg (20.24 lbs)
Environmental compliance	
ENERGY STAR, EPEAT Silver	
Service and warranty	
1 year Limited Hardware Warranty ² (USA & LAR) 3 years Limited Hardware Warranty (rest of world); Advanced Exchange Service ³ (All regions)	

¹ Color gamut (typical) is based on CIE1976 (84% of NTSC) and CIE1931 (72%) test standards.

² For a copy of the Limited Hardware Warranty, write to Dell USA LP, Attn: Warranties, One Dell Way, Round Rock, TX 78682 or see www.dell.com/warranty.

³ Advanced Exchange Service: Replacement part/unit dispatched, if needed, following completion of phone/online diagnosis. Fee charged for failure to return defective unit. Availability varies. Other conditions apply.



Product specifications

Dell S2440L 24" Monitor with LED

Display	
Viewable image size (diagonal)	60.97 cm (24 inches)
Horizontal Vertical	531.36 mm (20.92 inches) 298.89 mm (11.77 inches)
Maximum resolution	1920 x 1080 at 60 Hz
Aspect ratio	16:9
Pixel pitch	0.277 mm
Brightness (typical)	250 cd/m ²
Color gamut (typical)	89% ¹
Color depth	16.7 million colors
Contrast ratio (typical)	5,000:1
Dynamic contrast ratio (typical)	8 million:1
Viewing angle (typical) vertical/horizontal	178°/178°
Response time (typical)	6 ms with overdrive (gray to gray)
Panel type	VA
Backlight	LED
Connectivity	
Connectors	VGA, HDMI
Design Features	
Stand	Tilt
Security	Security lock slot

Power	
AC input voltage/frequency/ current (max)	100 to 240 VAC/50 or 60 Hz ± 3 Hz/1.2 A
Power consumption (normal operation, typical)	18 W
Power consumption (active-off mode)	<0.5 W
Dimensions (with stand)	
Height	417.9 mm (16.45 inches)
Width	567.4 mm (22.34 inches)
Depth	190.8 mm (7.51 inches)
Weight	
Weight without stand assembly	3.60 kg (7.94 lbs)
Weight with stand assembly and cables	4.95 kg (10.91 lbs)
Weight with packaging	5.91 kg (13.03 lbs)
Environmental compliance	
ENERGYSTAR, EPEAT Silver	
Service and warranty	
1 year Limited Hardware Warranty ² (USA & LAR) 3 years Limited Hardware Warranty (rest of world); Advanced Exchange Service ³ (All regions)	

¹ Color gamut (typical) is based on CIE1976 (89% of NTSC) and CIE1931 (72%) test standards.

² For a copy of the Limited Hardware Warranty, write to Dell USA LP, Attn: Warranties, One Dell Way, Round Rock, TX 78682 or see www.dell.com/warranty.

³ Advanced Exchange Service: Replacement part/unit dispatched, if needed, following completion of phone/online diagnosis. Fee charged for failure to return defective unit. Availability varies. Other conditions apply.



Product specifications

Dell S2340L/M 23" Monitor with LED

Display	
Viewable image size (diagonal)	58.42 cm (23 inches)
Horizontal Vertical	509.18 mm (20.05 inches) 286.41 mm (11.28 inches)
Maximum resolution	1920 x 1080 at 60 Hz
Aspect ratio	16:9
Pixel pitch	0.265 mm
Brightness (typical)	250 cd/m ²
Color gamut (typical)	82% ¹
Color depth	16.7 million colors
Contrast ratio (typical)	1,000:1
Dynamic contrast ratio (typical)	8 million:1
Viewing angle (typical) vertical/horizontal	178°/178°
Response time (typical)	7 ms with overdrive (gray to gray)
Panel type	In-plane switching
Backlight	LED
Connectivity	
Connectors (S2340L)	VGA & HDMI
Connectors (S2340M)	VGA & DVI-D (HDCP)
Design Features	
Stand	Tilt
Security	Security lock slot

Power	
AC input voltage/frequency/ current (max)	100 to 240 VAC/50 or 60 Hz ± 3 Hz/1.2 A
Power consumption (normal operation, typical)	19 W
Power consumption (active-off mode)	<0.5W
Dimensions (with stand)	
Height	398.9 mm (15.70 inches)
Width	532.2 mm (20.95 inches)
Depth	175.8 mm (6.92 inches)
Weight	
Weight without stand assembly	2.95 kg (6.50 lbs)
Weight with stand assembly, cables, adapter, and dongle	3.91 kg (8.62 lbs)
Weight with packaging	4.95 kg (10.91 lbs)
Environmental compliance	
ENERGYSTAR, EPEAT Silver	
Service and warranty	
1 year Limited Hardware Warranty ² (USA & LAR) 3 years Limited Hardware Warranty (rest of world); Advanced Exchange Service ³ (All regions)	

¹ Color gamut (typical) is based on CIE1976 (82% of NTSC) and CIE1931 (72%) test standards.

² For a copy of the Limited Hardware Warranty, write to Dell USA LP, Attn: Warranties, One Dell Way, Round Rock, TX 78682 or see www.dell.com/warranty.

³ Advanced Exchange Service: Replacement part/unit dispatched, if needed, following completion of phone/online diagnosis. Fee charged for failure to return defective unit. Availability varies. Other conditions apply.



Product specifications

Dell S2240L/M 21.5" Monitor with LED

Display	
Viewable image size (diagonal)	54.62 cm (21.5 inches)
Horizontal Vertical	476.06 mm (18.76 inches) 267.78 mm (11.85 inches)
Maximum resolution	1920 x 1080 at 60 Hz
Aspect ratio	16:9
Pixel pitch	0.248 mm
Brightness (typical)	250 cd/m ²
Color gamut (typical)	82% ¹
Color depth	16.7 million colors
Contrast ratio (typical)	1,000:1
Dynamic contrast ratio (typical)	8 million:1
Viewing angle (typical) vertical/horizontal	178°/178°
Response time (typical)	7 ms with overdrive (gray to gray)
Panel type	In-plane switching
Backlight	LED
Connectivity	
Connectors (S2240L)	VGA & HDMI
Connectors (S2240M)	VGA & DVI-D (HDCP)
Design Features	
Stand	Tilt
Security	Security lock slot

Power	
AC input voltage/frequency/ current (max)	100 to 240 VAC/50 or 60 Hz ± 3 Hz/1.2 A
Power consumption (normal operation, typical)	18 W
Power consumption (active-off mode)	<0.5W
Dimensions (with stand)	
Height	380.2 mm (14.97 inches)
Width	499.1 mm (19.65 inches)
Depth	175.8 mm (6.92 inches)
Weight	
Weight without stand assembly	2.60 kg (5.73 lbs)
Weight with stand assembly, cables, adapter, and dongle	3.69 kg (8.13 lbs)
Weight with packaging	4.60 kg (10.14 lbs)
Environmental compliance	
ENERGYSTAR, EPEAT Silver	
Service and warranty	
1 year Limited Hardware Warranty ² (USA & LAR) 3 years Limited Hardware Warranty (rest of world); Advanced Exchange Service ³ (All regions)	

¹ Color gamut (typical) is based on CIE1976 (82% of NTSC) and CIE1931 (72%) test standards.

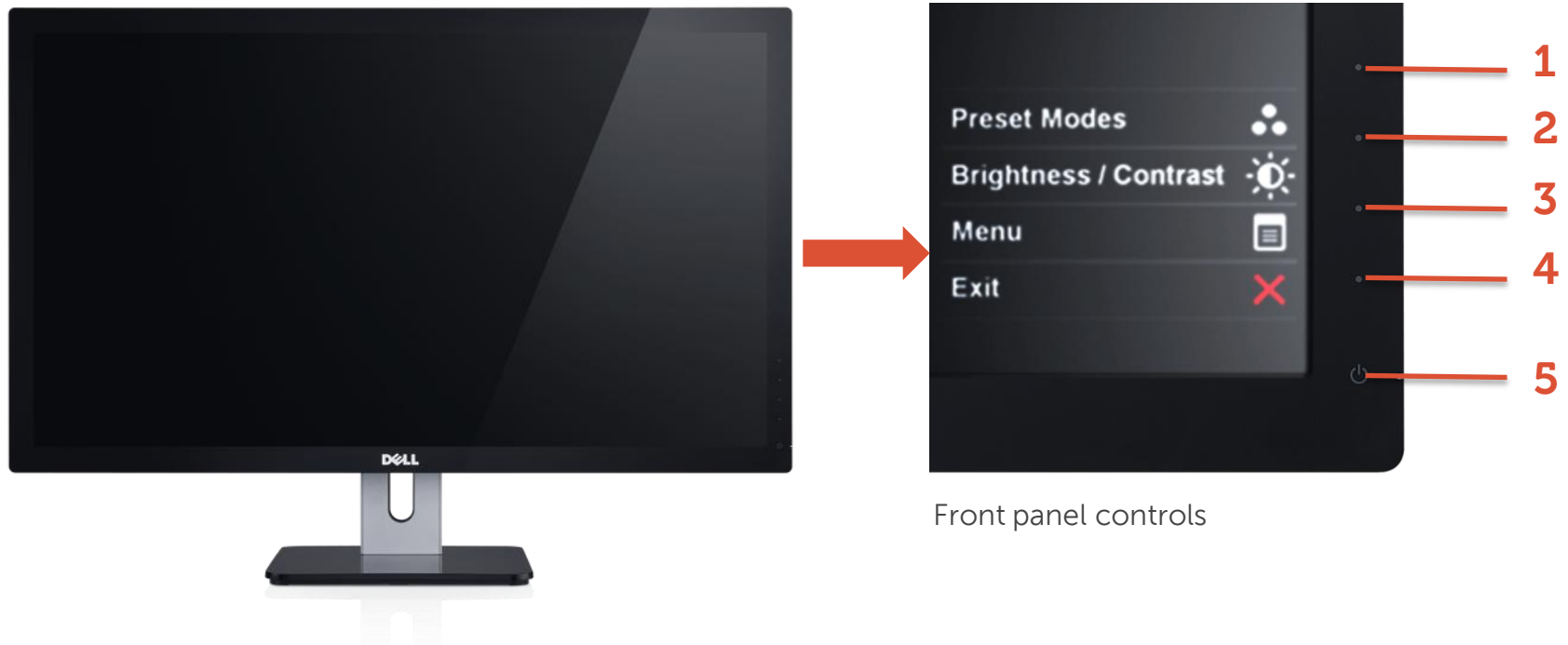
² For a copy of the Limited Hardware Warranty, write to Dell USA LP, Attn: Warranties, One Dell Way, Round Rock, TX 78682 or see www.dell.com/warranty.

³ Advanced Exchange Service: Replacement part/unit dispatched, if needed, following completion of phone/online diagnosis. Fee charged for failure to return defective unit. Availability varies. Other conditions apply.



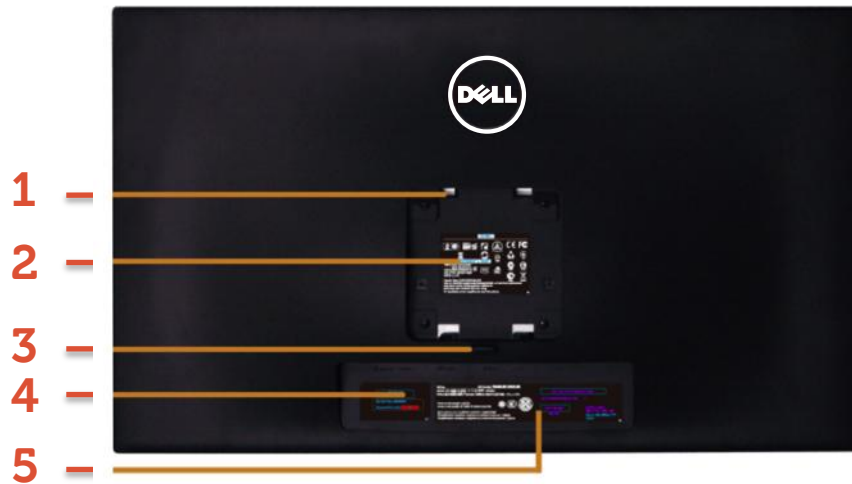
S2740L Front view

Label	Description
1	Customizable Shortcut Key 1 (Default: Preset Modes)
2	Customizable Shortcut Key 2 (Default: Brightness/Contrast)
3	Menu
4	Exit
5	Power (with power light indicator)



S2740L Back view

Label	Description
1	Wall mounting holes (100mm x 100mm – behind attached VESA plate)
2	Regulatory label
3	Stand release button
4	Service tag label
5	Barcode serial number label
6	Cable management slot



Back View with monitor stand

S2740L Side views

Left view

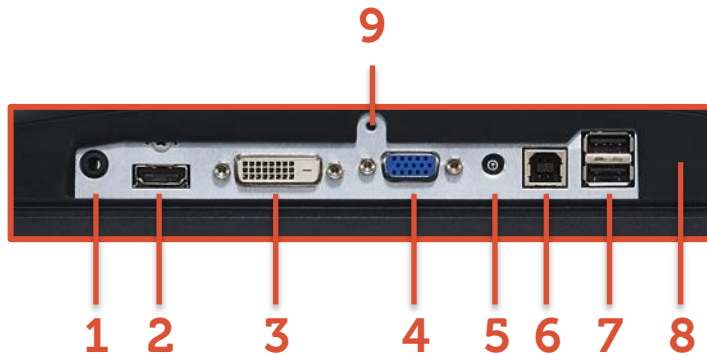


Right view



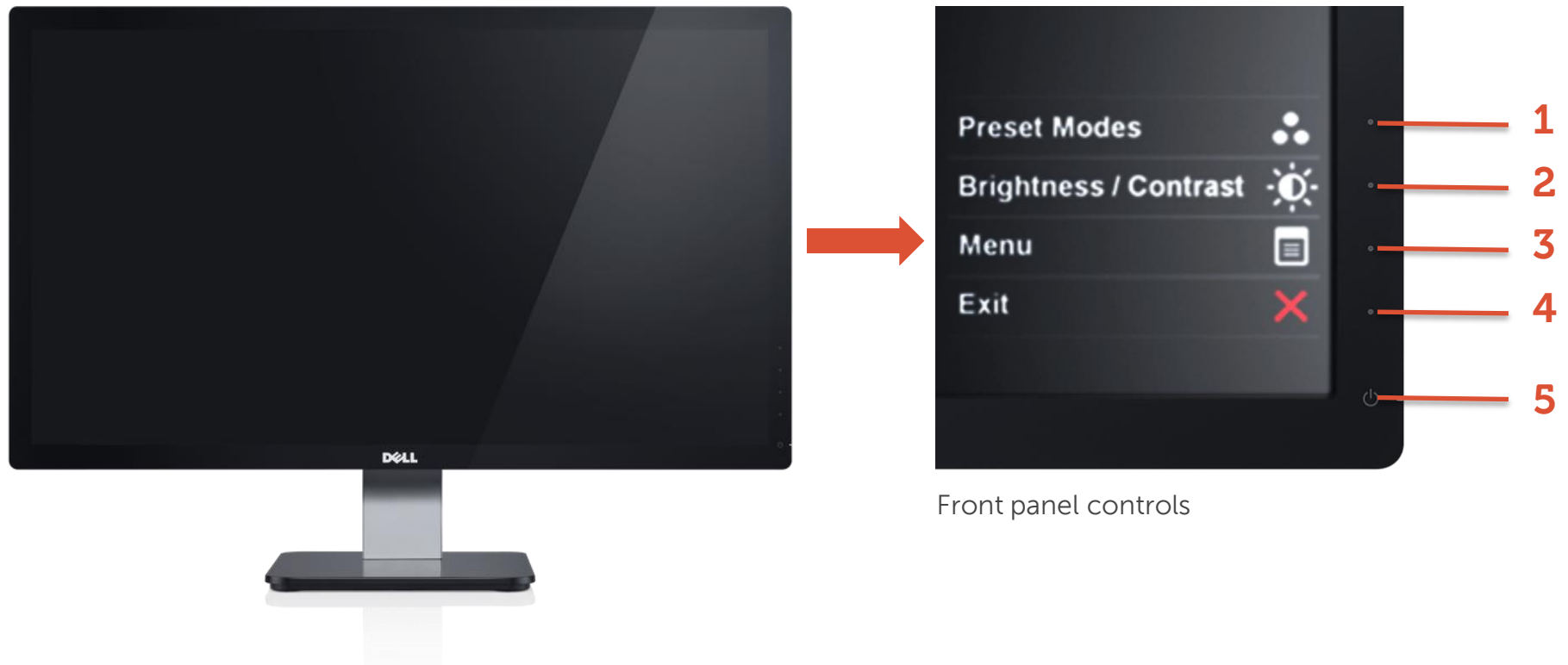
S2740L Bottom view

Label	Description
1	Audio line-out
2	HDMI connector
3	DVI connector
4	VGA connector
5	DC power cord connector
6	USB upstream port
7	USB downstream port
8	Security lock slot
9	Stand lock feature



S2440L Front view

Label	Description
1	Customizable Shortcut Key 1 (Default: Preset Modes)
2	Customizable Shortcut Key 2 (Default: Brightness/Contrast)
3	Menu
4	Exit
5	Power (with power light indicator)



S2440L Back view

Label	Description
1	Security lock slot
2	Regulatory label
3	Barcode serial number label
4	Stand release button
5	Cable management clip



Back View with monitor stand

S2440L Side views

Left view

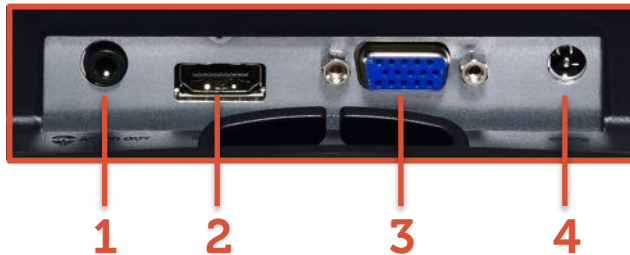


Right view



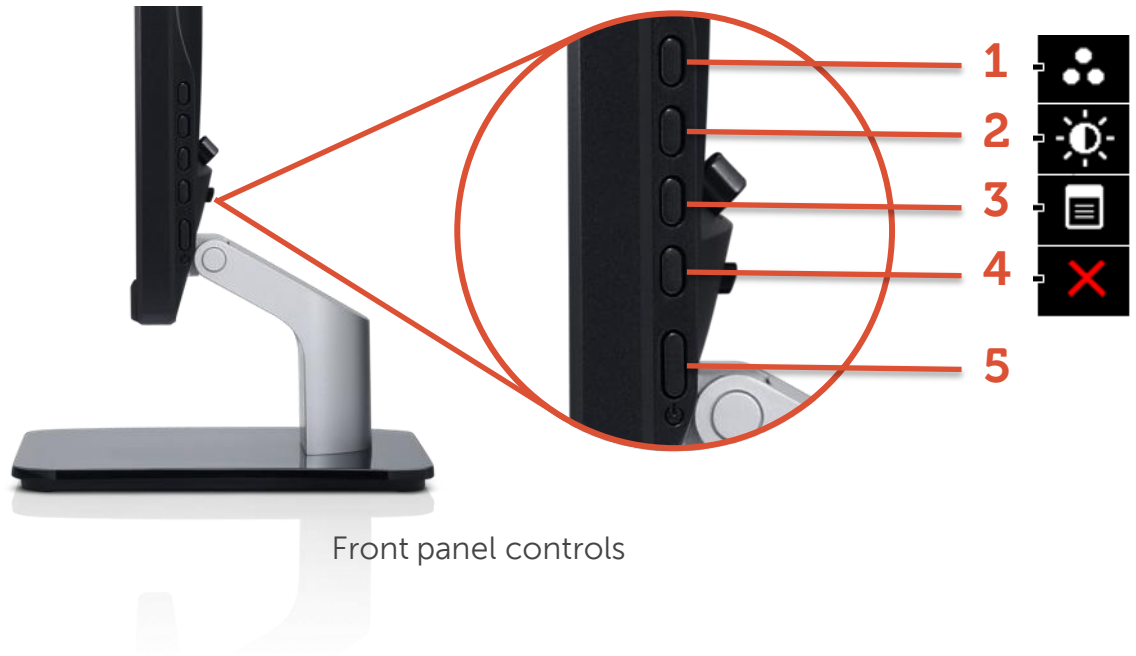
S2440L Bottom view

Label	Description
1	Audio line-out
2	HDMI connector
3	VGA connector
4	DC power cord connector



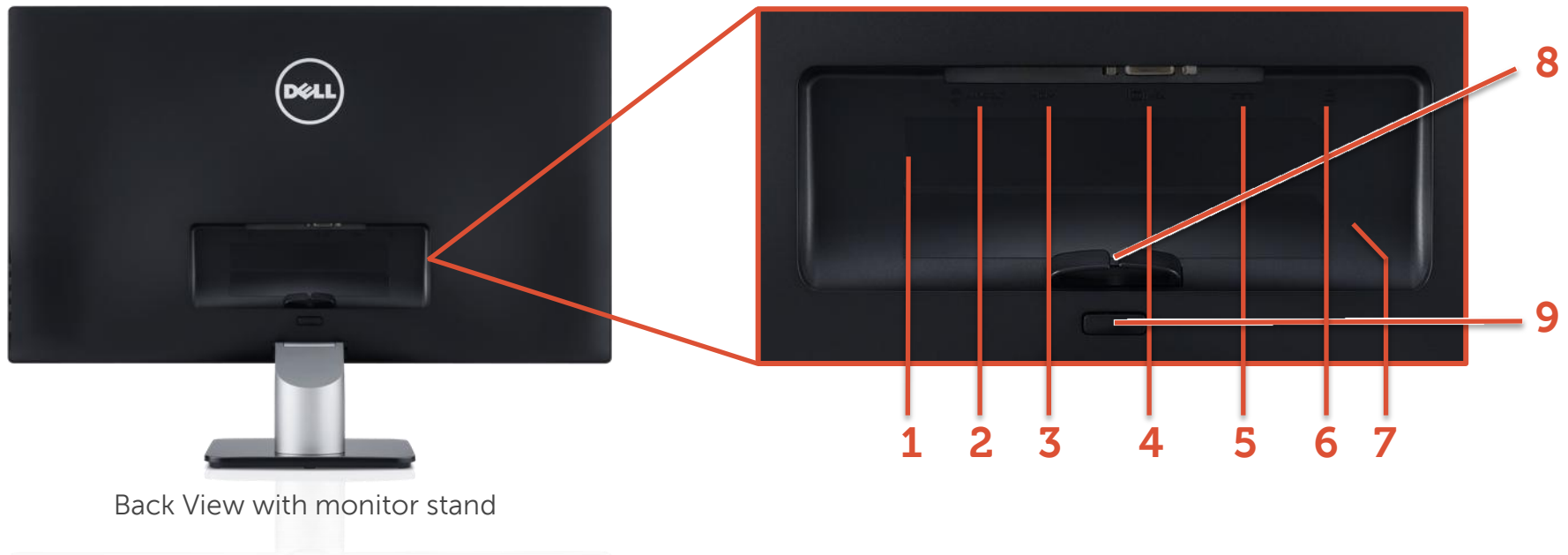
S2340L & S2240L Front view

Label	Description
1	Preset Modes
2	Brightness/Contrast
3	Menu
4	Exit
5	Power On/Off button
6	Power LED indicator



S2340L & S2240L Back view

Label	Description
1	Regulatory rating label
2	Audio Line-out
3	HDMI connector
4	VGA connector
5	Adapter connector
6	Security lock slot
7	Barcode serial number label
8	Cable clip
9	Stand release button



S2340L & S2240L Side views & Bottom view

Left view



Right view

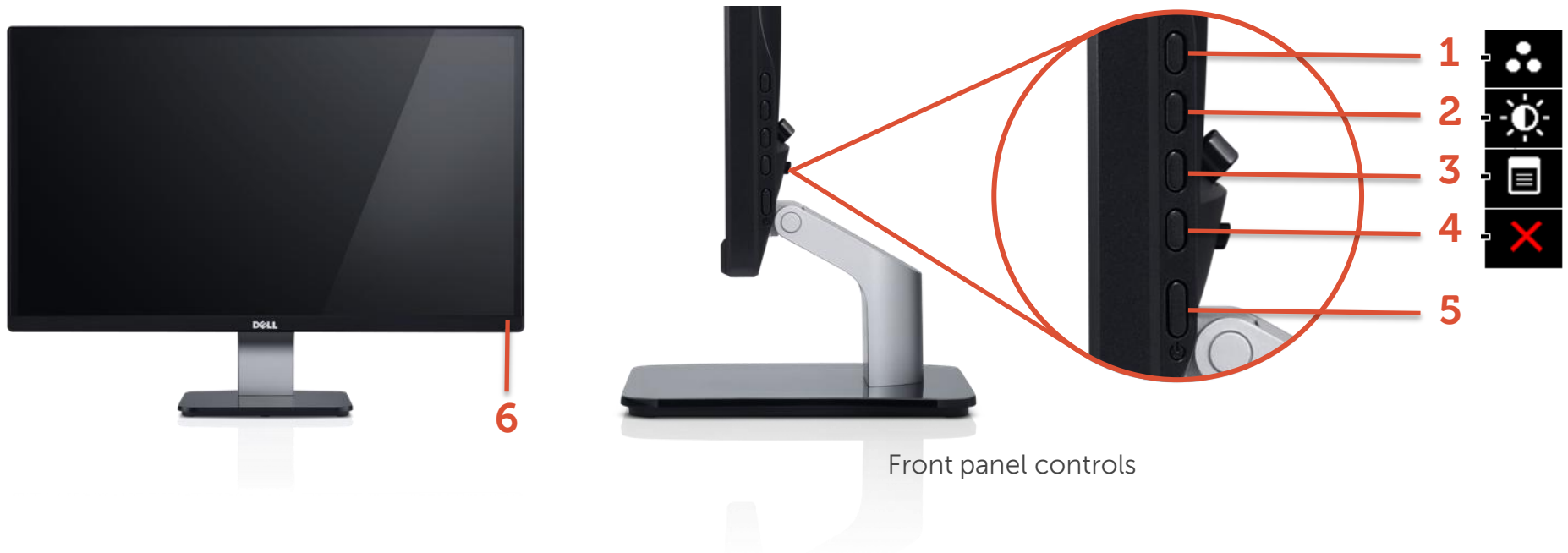


Bottom view



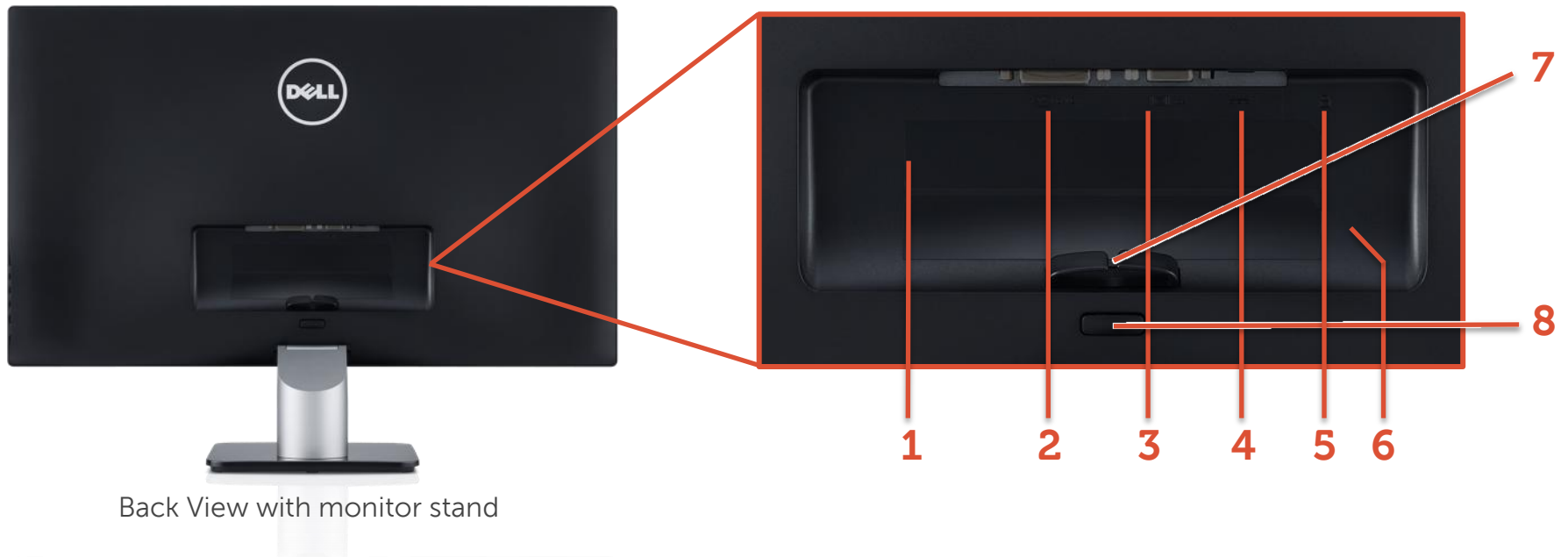
S2340M & S2240M Front view

Label	Description
1	Preset Modes
2	Brightness/Contrast
3	Menu
4	Exit
5	Power On/Off button
6	Power LED indicator



S2340M & S2240M Back view

Label	Description
1	Regulatory rating label
2	DVI connector
3	VGA connector
4	Adapter connector
5	Security lock slot
6	Barcode serial number label
7	Cable clip
8	Stand release button



S2340M & S2240M Side views & Bottom view

Left view



Right view



Return information

Dell Inc. provides this equipment for evaluation purposes only. All equipment must be returned to Dell Inc. in good working condition. Equipment must be in its original box, including all packaging, documentation, cables, and diskettes.

This equipment remains the property of Dell Inc. unless paid for in full by the evaluator. Dell Inc. reserves the right to collect from the evaluator the full retail value of the equipment if not returned promptly and in good working condition on or before the due date.